

Unit 1

Fun with friends

Ch 1. My Bicycle

I have a red bicycle.
I pedal and I ride.
Trin... trin... trin... goes the bell.
Makes my friends move aside.



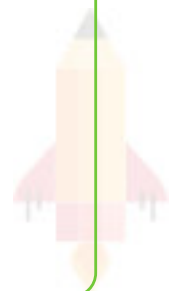
The seat is blue in colour,
The tyres and pedals are black.
Sometimes fast, sometimes slow,
But my bicycle is always on track



To keep my bicycle moving,
All I need is some air.
I put on my little helmet,
And go happily everywhere.

New words

Pedal	:- Parts of bicycle push with legs
Aside	:- One side
Sometimes	:- Not always
Track	:- Path or road
Helmet	:- A type of hard hat
Everywhere	:- All places



One Point Learning

Exercise

Let us speak

A. Share with the class

1. Have you seen a bicycle?

Ans. Yes I have seen a bicycle.

2. Where have you seen it?

Ans. I have seen in my house.

3. What colour is it? Any colour

Ans. It is blue in colour.

4. Who generally rides it?

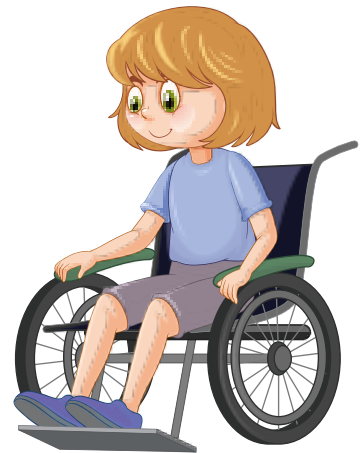
Ans. My brother rides.

5. Have you seen a tricycle?

Ans. Yes, I have seen a tricycle.

6. Have you seen a wheelchair?

Ans. Yes, I have seen a wheelchair.



Let us listen

Listen to the sounds that your teacher has recorded on the mobile. Can you identify the sounds of different bells?

Ans. Yes, I can identify the sounds of a school bell, bicycle bell, doorbell, alarm bell, cowbell, call bell, temple bell, and ice cream truck bell.



One Point Learning

Let us speak

Read the words below each picture

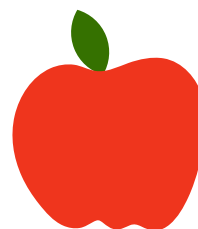
1



an ant



an axe



an apple

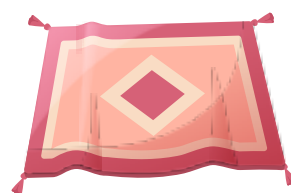
2



a rat

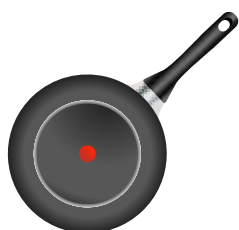


a cat



a mat

3



a pan



a man

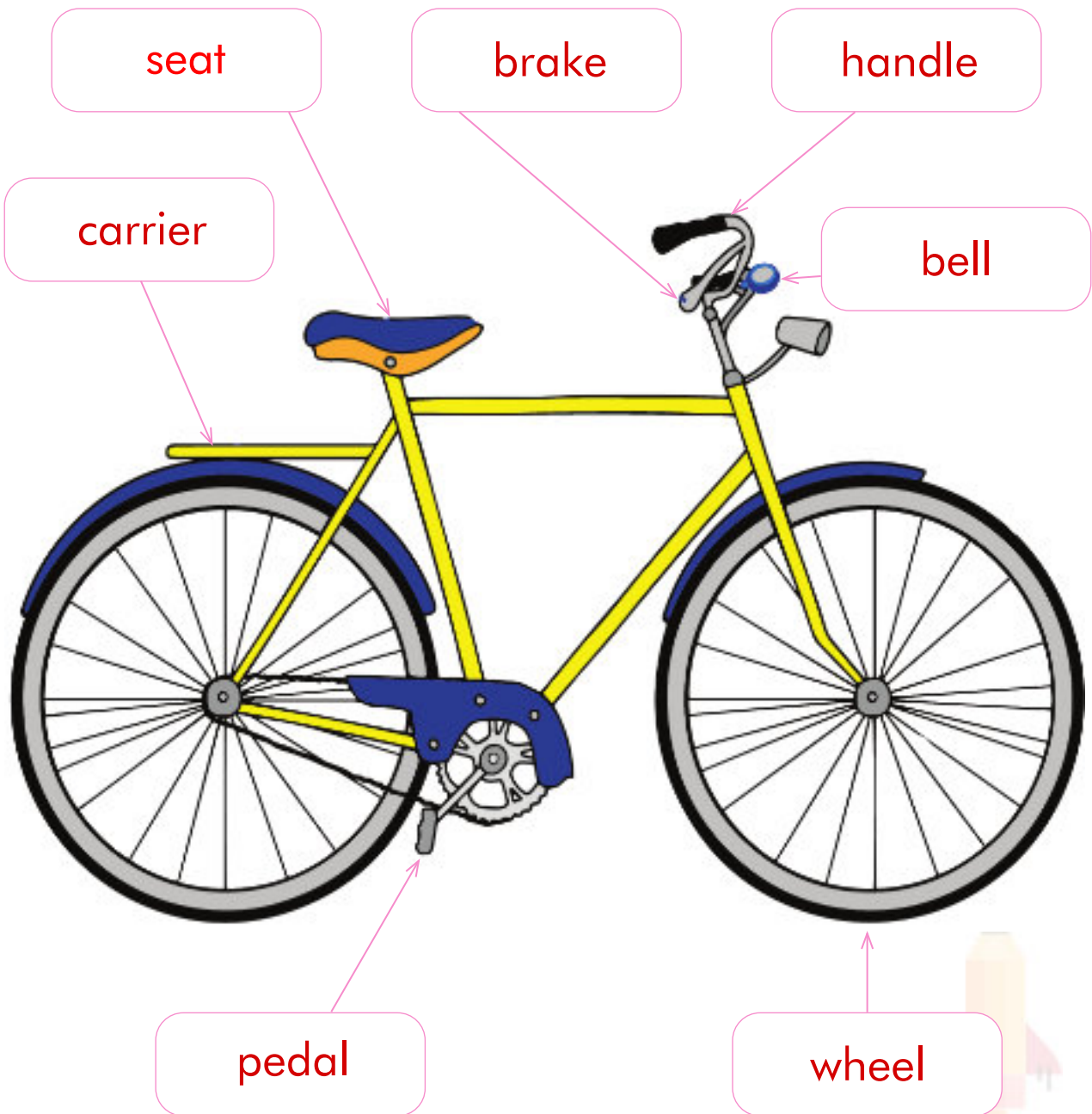


a cap

Let us write

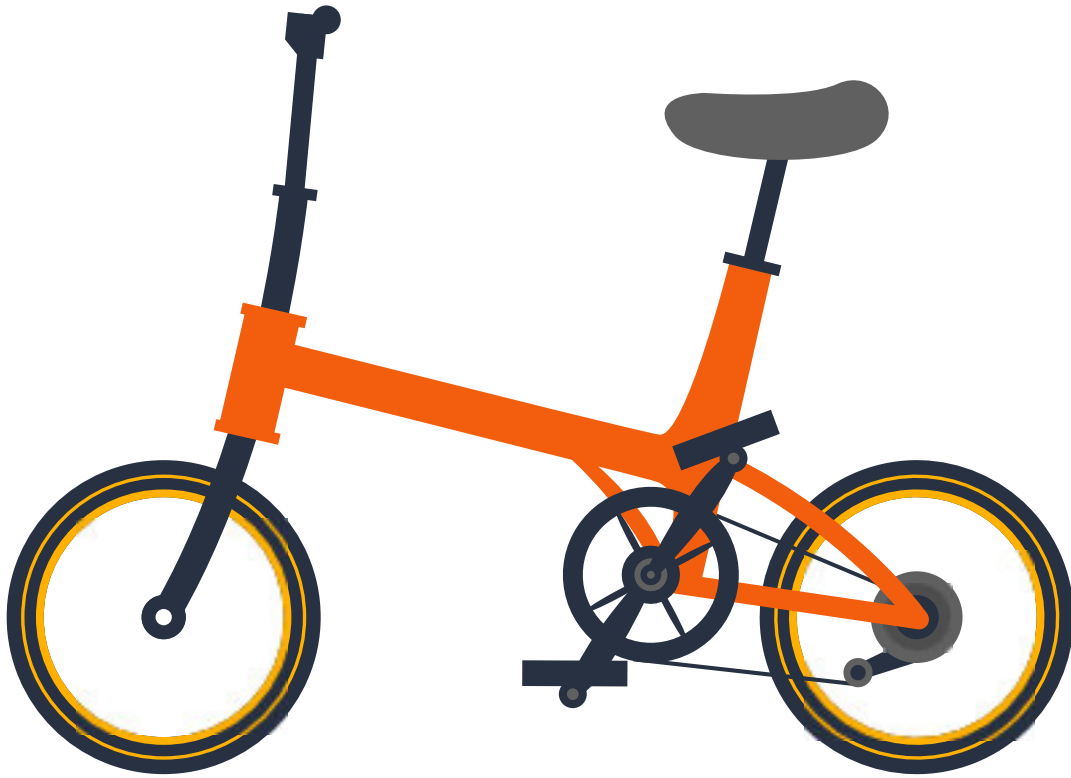
A. Write the names of the parts of the bicycle in the given boxes. You may use the help box for selecting names.

seat | pedal | wheel | bell | handle | carrier | brake



Let us think

A. Imagine that you have a magic bicycle. Draw it in the box.



www.onepointlearning.com

What would you do with your magic bicycle?

Ans. I will fly it to Paris. I will see Eiffel tower and play music of my magic bicycle.



One Point Learning

Let us write

A. Complete the following sentences.

1. The child in the poem has a red bicycle.
2. The sound of the bell makes people move aside.
3. The pedals and tyres are black.

B. Put a ☑ for the correct sentences and a ☒ for the incorrect sentences.

1. The child has a blue bicycle.
2. The bell goes trin... trin... trin.
3. The child's bicycle is always fast.
4. The child needs some water to keep the bicycle moving.
5. The child puts on a little helmet while riding the bicycle.

☐
☐
☐
☐
☐

Scan to Download Free Worksheets



One Point Learning