

**Class 5
EVS**

Sunita in Space


A Fill in the blanks.

Moon	Countries	Kalpana Chawla	Globe	Night
Gravity	Meteorite	Land and seas	blobs	Blue

- Water floats like _____ in space.
- _____ is the model of the earth.
- We see stars mostly at _____.
- _____ part on the globe is sea.
- Division of land on the earth is done by us into _____.
- _____ is the natural satellite of the earth.
- _____ was Sunita's friend.
- Sunita Williams could only make out the _____ and the _____ on the earth from space.
- On earth, when we throw something up, it comes down due to _____.
- A shooting star is a _____ which catches fire on entering the earth's atmosphere.

B Match the following.

Column A	Column B	Ans.
1. Sky, stars, sun and moon	i. Represents seas	1. ___
2. Blue part on the globe	ii. Gravity	2. ___
3. People in Argentina and India are	iii. They are all in space	3. ___
4. Pull of earth is called	iv. Standing upside down in relation to each other	4. ___

C	Answer in one word.
----------	----------------------------

1. A special vehicle designed to take the astronauts in the space _____
2. Name the place Where Sunita Willams is working. _____
3. A countries that situated on the lower part of the globe. _____
4. Movement of the earth around the Sun is called _____
5. The study of heavenly bodies to learn what influence they
may have on human life is called _____
6. The first man to walk on the moon. _____
7. A shining star that seems to move with a constant speed
in the sky can be a _____
8. A force with which earth pulls everything towards it _____

D	Answer the following in one word or one line.
----------	--

1. From whom was Sunita inspired in her childhood?
Ans. _____
2. What did Sunita want to become when she was young?
Ans. _____
3. What did she become when she grew up?
Ans. _____
4. What does the earth look like from space?
Ans. _____
5. Name two festivals that are related to Moon.
Ans. _____
6. Why do children always slide down the slide and not up?
Ans. _____

E Identify the following pictures and write the name.



1. _____



2. _____



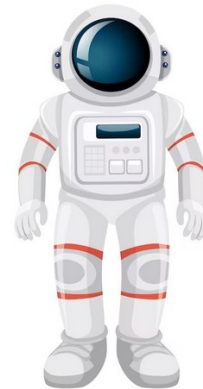
3. _____



4. _____



5. _____



6. _____

Answer

A.

- | | | | |
|--------------|---------------|-------------------|------------------|
| 1. Blobs | 2. Globe | 3. Night | 4. Blue |
| 5. Countries | 6. Moon | 7. Kalpana Chawla | 8. Land and seas |
| 9. Gravity | 10. Meteorite | | |

B.

- | | | | |
|--------|------|-------|-------|
| 1. iii | 2. i | 3. iv | 4. ii |
|--------|------|-------|-------|

C.

1. By Kalpana Chawla
2. Sunita wanted to become a teacher.
3. She became an astronaut.
4. The earth looks spherical in shape.
5. Eid, Karwachauth, etc.
6. Children always slide down the slide because of the earth's gravitational force.

D.

1. Spaceship
2. NASA
3. Brazil
4. Revolution
5. Astrology
6. Neil Armstrong
7. Satellite
8. gravitational force

E.

1. Sunita Williams
2. Kalpana Chawla
3. Rakesh Sharma
4. Neil Armstrong
5. Satellite
6. Space suit