

Class 4 Math

Telling Time

We measure time using hours, minutes and seconds.

1 day = 24 hours

1 hour = 60 minutes

1 minute = 60 seconds

Analog Clock



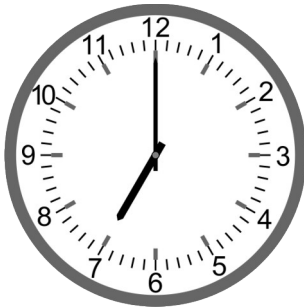
hands to tell time

Digital Clock

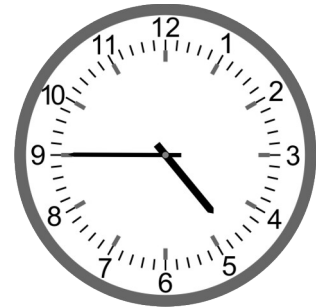


display time in numbers

A. Tell the correct time.





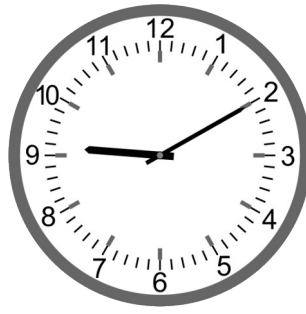


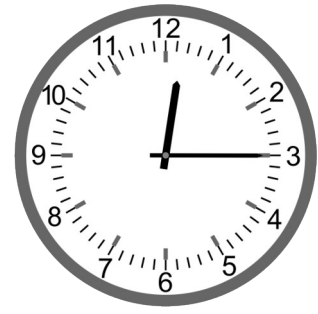




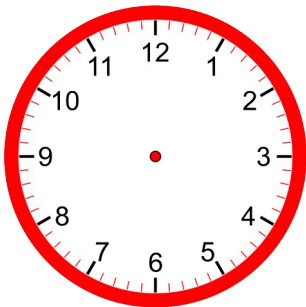




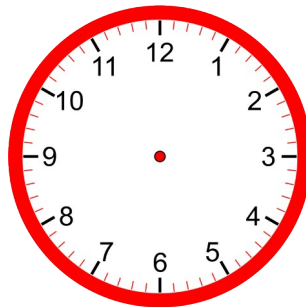




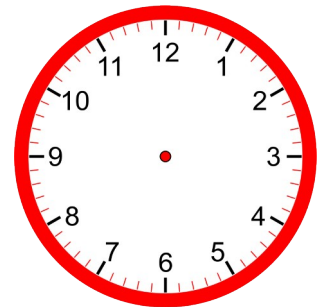
B. Draw the hands in correct place to show the time.



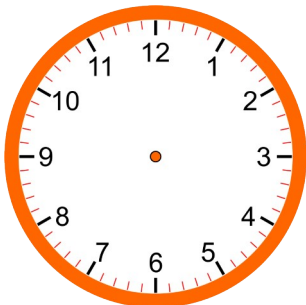
7:45



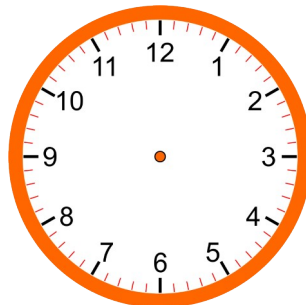
2:15



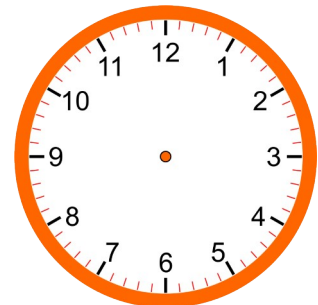
6:30



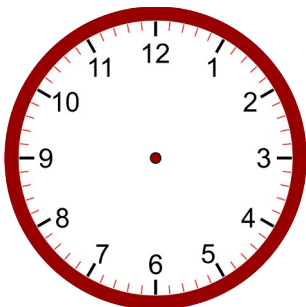
1:10



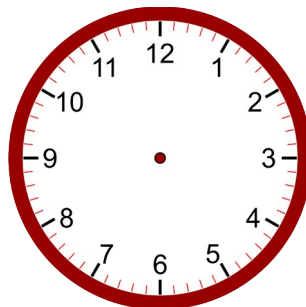
4:05



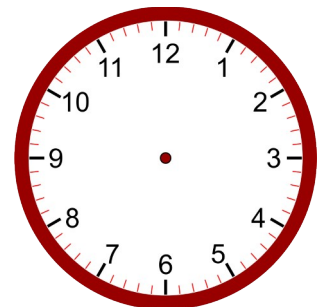
12:20



3:50



5:25



11:55

Answers

A.

7:00

1:55

4:45

10:35

5:20

7:40

2:45

9:10

12:15